

# Kooky Spooky

Flower Show

*With*

*ghouls, Ghosts and Goblins*

*October 30 – November 2, 2008*

*Wentfort Hall, Lenox, MA*



# THE LENOX GARDEN CLUB

MEMBER OF THE GARDEN CLUB OF AMERICA

PRESENTS

# Kooky Spooky

*GCA Club Flower Show*



OCTOBER 30-NOVEMBER 2, 2008

VENTFORT HALL  
MUSEUM OF THE GILDED AGE  
104 WALKER STREET  
LENOX, MA 01240

## GENERAL RULES

1. All rules as stated in The Garden Club of America Flower Show and Judging Guide, 2000 revised edition shall apply.
2. Any clarification or change in the rules as stated in this schedule shall be communicated promptly in writing to exhibitors in the class and at the show, to the Judges and the Passing Committee.
3. While The Lenox Garden Club and Ventfort Hall will exercise due caution in safeguarding exhibits, responsibility for damage, loss or personal injury cannot be assumed.
4. All classes are open to members of The Lenox Garden Club and the general public. Each flower arranging entry may have a maximum of two designers and both names must appear on the entry card.
5. A novice is an individual who has not won a blue ribbon

## ENTRIES

6. All containers, stands, bases, mats and accessories should be discretely labeled with the exhibitor's name and telephone number.
7. To enter, please call: MaryEllen O'Brien (413-229-3025) before October 1, 2008.
8. Classes will be filled in the order received ... if an exhibitor should have to withdraw, she must find a substitute unless there is a waiting list.

## TIME TABLE

### OCTOBER 30

8:00-9:30 am	Flower Arrangements received and passed
9:30 am	Entries close
9:45 am	Judges briefing
10:00 am	Judging begins
12:00	Judges Luncheon at Ventfort Hall
1:00	Show Opens to the Public
4:00 – 6:00pm	Opening Reception Afternoon Tea Sponsored by Ventfort Hall Associates

### OCTOBER 31

10:00 am -5:00 pm 10am Refreshing / 10am -5pm Show Hours

### NOVEMBER 1

10:00 am -5:00 pm 10am Refreshing / 10am -5pm Show Hours

### NOVEMBER 2

10 am – 4:00 pm 10am Refreshing / 10am -4pm Show Hours

4:00 pm – 4:45 pm All entries must be removed

9. All plant material must be correctly identified with the botanical and common names, if possible. *The RHS Index of Garden Plants* and *The AHS A to Z Encyclopedia of Garden Plants* are the acceptable references.

10. The Garden Club of America expects all exhibitors to be aware of the need to promote conservation of endangered and threatened plants. Plants collected from the wild and listed on the state's Natural Heritage Program may not be exhibited in a GCA flower show. Cultivated plant material listed by the state's Natural Heritage program may be exhibited if accompanied by a typed card stating that it has not been collected from the wild and giving information concerning its cultural requirements and methods of propagation.

11. All entries must be passed by the Passing Committee before the exhibitor may leave the exhibit area. The Committee reserves the right to refuse any entry in poor condition, or one that does not conform to the schedule. The exhibitor has the option of correcting the entry, if possible, before the entries close. If not corrected, the entry cannot be judged, but may remain in place and marked FOR EXHIBIT ONLY.

12. Once an entry is passed, the exhibitor must leave the exhibition area and may not touch the entry again, except after judging to carry out any necessary maintenance and refreshing.

## FLOWER ARRANGEMENT RULES

1. Please read the General Rules.
2. An exhibitor may make only one entry per class, but may enter more than one class. An entry must be arranged by the exhibitor(s) under whose name(s) it has been entered. All participants must be listed.
3. All arrangements must include fresh and/or dried plant material. Artificial plant material is not allowed.
4. Fresh plant material must be in water or be conditioned in such a way as to remain in pristine form while on exhibition.
5. An arrangement not maintained in show condition may have its award removed.
6. Live animals (including fish), taxidermy, natural birds' nests, cut fruit or vegetables, dairy products, locally invasive plant material and protected sea life are not permitted.
7. Mechanics should not be visible unless they are an integral part of the design.
8. Flowers need not have been grown by the exhibitor.
9. Accessories are permitted unless otherwise indicated.

\*An accessory is defined as anything other than plant material, base, mechanics, background, or container used anywhere in the design. It must be subordinate to the plant material.

10. All entries are to be accompanied by an Entry Card identifying plant material using both botanical and common names.

11. Pedestals may not be moved, nor may the tops be enlarged. Draping is allowed. Pedestal arrangements may not exceed 30" in width or depth unless otherwise stated. There are no height restrictions unless otherwise stated.

## FLOWER ARRANGING SCALE OF POINTS

Conformance (to Schedule requirements)	20
Design (Elements and Principles)	42
Artistic Concept (selection/organization)	12
Expression (interpretation of class)	10
Distinction (marked superiority in all respects)	16

---

100

## FLOWER ARRANGING AWARDS

FIRST (Blue), SECOND (Red), THIRD (Yellow), and HONORABLE MENTION (White) may be awarded.

### BEST IN SHOW

The Best in Show may be selected from among the Blue

Ribbon winners and presented to the arrangement deemed to be the best.

### GERTRUDE BURDSALL DESIGN AWARD

The Lenox Garden Club, Gertrude Burdsall Award may be awarded to the entry judged to be superior and distinguished by an artistic and creative response to an imaginative schedule.

## FLOWER ARRANGING STYLE DEFINITIONS

### EXHIBITION TABLE DESIGN

A table exhibit in which the components-dishes, linens, plant material, etc.-are artistically arranged to present a coordinated design. The practical service of food should not be implied.

### TRANSPARENCY DESIGN ARRANGEMENT

A contemporary design style arrangement in which part of an arrangement is seen through a transparent component: such as sea fan, branches, mesh, glass, etc. (which is an integral part of the design). Such designs are strongly three dimensional.

## TIPS FOR FLOWER ARRANGEMENT EXHIBITORS

1. Look up botanical names of your plant material before you arrive at the flower show. List all plant materials on your entry card with botanical names first followed by common name. Print with a typewriter or computer.
2. Plant material conditioning:
  - a. Plan on conditioning your plant material at least 24 hours in advance of the flower show.
  - b. Plant material placed in a dark location will absorb more water.
  - c. Remove all foliage below the water line.
  - d. Scrape bark off the bottom 1" off woody stems with a knife or potato peeler. Then slit the stems.
  - e. To revive wilted material....cut stems on an angle and soak in warm water.
3. Check list for your entry before being passed:
  - a. Are the mechanics hidden unless they are an integral part of the design? No oasis showing and no glaring in your container?
  - b. Is the arrangement balanced – side to side, front to back, and top to bottom?
  - c. Are the proportions correct-plant material to the container, any accessories to the arrangement and to the staging.
  - d. Are the components in scale with each other?
  - e. Is there dominance without being out of proportion?
  - f. Is there contrast? Look for unfinished spaces (remember that space is an important part of a design.
  - g. Is the back finished enough to create depth?
  - h. Have you filled the container with water? Would it help prolong the life of the arrangement to use conditioner in the water?
4. All questions regarding the flower arrangement classes should be directed to the class consultant.
5. Read your Flower Show Schedule. Make sure that you have followed all the guidelines. Be aware of the timetable in your schedule. This will tell you the proper time to drop off and pick up your flowers.

## FLOWER ARRANGEMENT DIVISION

To Register...CALL: MaryEllen O'Brien 413-229-3025 or  
EMAIL: [maryellenjobrien@hotmail.com](mailto:maryellenjobrien@hotmail.com)

**CLASS: 1** *MR. JACK O' LANTERN* – Welcomes you to Ventfort Hall and Kooky Spooky Halloween. Carve a pumpkin and decorate it with dried and/or fresh plant materials. Viewed from 3 sides and displayed on the steps at Ventfort Hall on a container provided by the committee. Arrangement may not exceed 15" in any direction and will be placed tightly against the riser portion of the stair.

**LOCATION:** Stairs to the Second Floor

**4 Entries**

**CONSULTANT:** Selina Lamb

**Phone:** 413-528-5824

**Email:** [slamb@selinalamb ltd.com](mailto:slamb@selinalamb ltd.com)

**CLASS: 2** *WITCHES' BREW* – A fire burns and a caldron bubbles. It's a Witches Tea Party at Ventfort Hall. An Exhibition Table Design, displayed on a 31" round top table, 30" high. Black Tablecloth to be provided by the committee. Overlays permitted. Viewed from all sides.

**LOCATION:** Great Room

**4 Entries**

**CONSULTANT:** Kimberley Crocker

**Phone:** 860-675-1223

**Email :** [crockerk@avonoldfarms.com](mailto:crockerk@avonoldfarms.com)

**CLASS: 3** *GHOULS and GOBLINS* - The wind blew, she listened intently...soft murmurs could be heard; and then, suddenly, a loud shriek...somewhere at Ventfort Hall a Goblin was lurking. A design that includes a pumpkin and or gourds, displayed on a pedestal 38.5" tall with an 18" square top. Viewed from 3 sides.

**LOCATION:** Alcove of the Great Room

**4 Entries**

**CONSULTANT:** Jeannene Booher

**Phone:** 413-269-6073

**Email :** [BOOLAP@aol.com](mailto:BOOLAP@aol.com)

**CLASS: 4** *GHOST STORY* - It was a cold and an eerie night...when suddenly, a bolt of lightening lit the sky and illuminated the room while an apparition moved across the floor. A Transparency Design, displayed on a 16" matte black cube. Viewed from all sides. Arrangement may rise to 6' from the floor.

**LOCATION:** Library

**4 Entries**

**CONSULTANT:** Martha Piper

**Phone:** 413-528-1815

**Email :** [mfpiper@bcn.net](mailto:mfpiper@bcn.net)

**CLASS: 5** *WHO'S THERE?* - The sound of the bolt unlatching could be heard, the heavy wood door slowly opened...it creaked and groaned, and in the moonlight, a silhouette, dark and foreboding, stood in the doorway. A mask constructed out of dried plant materials and displayed on a form provided by the committee. Plant materials may be embellished. Viewed from 3 sides.

**LOCATION:** Sideboard in the Dining Room

**4 Entries**

**CONSULTANT:** Bridget Hubbard

**Phone:** 413-637-6990

**Email:** [bhubbard1@verizon.net](mailto:bhubbard1@verizon.net)



## HORTICULTURE RULES

1. Please read the General Rules.
2. Entries must have been owned and grown by the exhibitor for a minimum of three months.
3. An exhibitor may submit three entries per class, provided each is a different species or cultivar.
4. Classes may be subdivided and entries moved and/or reclassified at the discretion of the Horticulture Committee and/or the Judges.
5. Locally invasive plants are not permitted.
6. Container-grown plants must be exhibited in containers that are clean, unobtrusive and compatible with the exhibit. Terracotta-colored clay pots are preferred. Other options include stone-like (Hypertufa), green or terracotta plastic pots, bonsai containers, wire baskets, slatted orchid baskets and plants mounted on driftwood. Disguised double potting and top dressing are permitted; top dressing must not float when watered. Containers should not exceed 12" in diameter.
7. Containers are measured at the diameter or the diagonal of the inside rim and saucers must accompany all potted plants.
8. No hanging containers are allowed.

## HORTICULTURE SCALE OF POINTS

Cultural Perfection	50
Form	20
Grooming	15
Distinction (marked superiority in all respects)	15
<hr/>	
	100

## HORTICULTURE TIPS

1. Please carefully read the General Rules, the Horticulture Rules and the Schedule.
2. Fill out entry cards with the correct botanical and common names of each plant. Type or print the entry card legibly in waterproof black ink. Note pertinent information on propagation, culture dates and length of ownership.  
Try to have this information with you when you arrive at the show.
3. Water entries before arrival.
4. Container size is determined by measuring the longest inside measurement at the rim, circular containers are measured on the interior diameter; square or rectangular containers are measured on the interior diagonal.
5. Staking should be done as unobtrusively as possible.
6. Grooming:
  - a. Plants must be free of insects and disease
  - b. Containers should be as clean as possible.
  - c. Foliage and fruit should be clean, with no dirt or spray residue. The use of a leaf polishing agent is prohibited.
  - d. Dead and blemished material should be removed.
  - e. Damaged foliage may be trimmed but it should look natural.
  - f. Flowering plants should not be misted.
  - g. Soil surfaces should be clean. You may top dress the soil but use material that does not float. Keep the level below the top of the container.



## HORTICULTURE DIVISION

To Register...CALL: MaryEllen O'Brien 413-229-3025 or  
Email: maryellenjobrien@hotmail.com

**LOCATION: All PLANTS will be located in the Hall on 2 Tables**  
**CHAIRPERSON & CONSULTANT: Carolyn King**

**CLASS: 6**  *CREEPY CRAWLY*  
Trained Houseplants

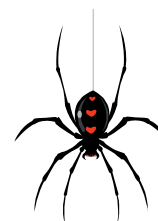
**CLASS: 7**  *HAUNTED HOUSE*  
Foliage Houseplants

**CLASS: 8**  *TRICK or TREAT*  
Blooming Houseplants

**CLASS: 9**  *SCARY & FRIGHTENING*  
Cacti and Succulents

**CLASS: 10**  *HAPPY HALLOWEEN*  
Par Class

A potted plant of exceptional horticultural merit, which does not qualify for entry elsewhere in the Horticulture Division. To be judged individually against perfection. No Hanging baskets are permitted in this class.



### HORTICULTURE AWARDS

FIRST (Blue), SECOND (Red), THIRD (Yellow), and HONORABLE MENTION (White) may be awarded.

#### HORTICULTURE BEST IN SHOW

The Best in Show may be selected from among the Blue Ribbon winners and presented to the arrangement deemed to be the best.

#### GERTRUDE BURDSALL HORTICULTURE AWARD

Given in memory of beloved member, Gertrude Burdsall of The Lenox Garden Club for an outstanding entry on the Horticulture Division, exemplifying perfection through prime condition and flawless grooming of the specimen. The entry must have places first, second, or third.

# THE LENOX GARDEN CLUB

P. O. Box 552, Lenox, Massachusetts 01240

The Lenox Garden Club – Founded 1911

Celebrating 100 Years in 2011

---

90 Members Strong

64 Active Members

20 Associate Members

4 Provisional Members

2 Honorary Members

---



## Kooky Spooky

*GCA Club Flower Show Committee*

---

President  
Flower Show Chairman  
Vice Chairman

Joan Comeau  
MaryEllen O'Brien  
Leslie Snyder

joancomeau@aol.com  
maryellenjobrien@hotmail.com  
lesliekrueger@gmail.com

Awards Chairman  
Class Consultants

MaryEllen O'Brien  
Jeannene Booher  
Kimberley Crocker  
Bridget Hubbard  
Selina Lamb  
Martha Piper

maryellenjobrien@hotmail.com  
boolap@aol.com  
crockerk@avonoldfarms.com  
bhubbard1@verizon.net  
slamb@selinalambtld.com  
mfpiper@bcn.net

Horticulture Chairman  
Hospitality Chairman  
Judges/Clerks Chairman  
Passing Chairman  
Schedule  
Staging Chairman  
Workshop Chairs

Carolyn King  
Paula Gimblette  
Leslie Snyder  
L.Snyder & M.O'Brien  
MaryEllen O'Brien  
Barbara May  
Leslie Snyder  
Kimberley Crocker  
MaryEllen O'Brien

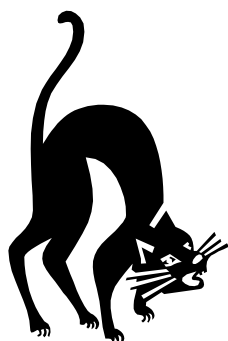
cgking2@adelphia.net  
n/a  
lesliekrueger@gmail.com  
maryellenjobrien@hotmail.com  
maryellenjobrien@hotmail.com  
cmay@nycap.rr.com  
lesliekrueger@gmail.com  
crockerk@avonoldfarms.com  
maryellenjobrien@hotmail.com  
tjasa@sprague.com

Liaison to Ventfort Hall

Tjasa Sprague



THE LENOX GARDEN CLUB



# **Kooky Spooky GCA Club Flower Show**

VENTFORT HALL, LENOX, MA  
October 30 – November 2, 2008